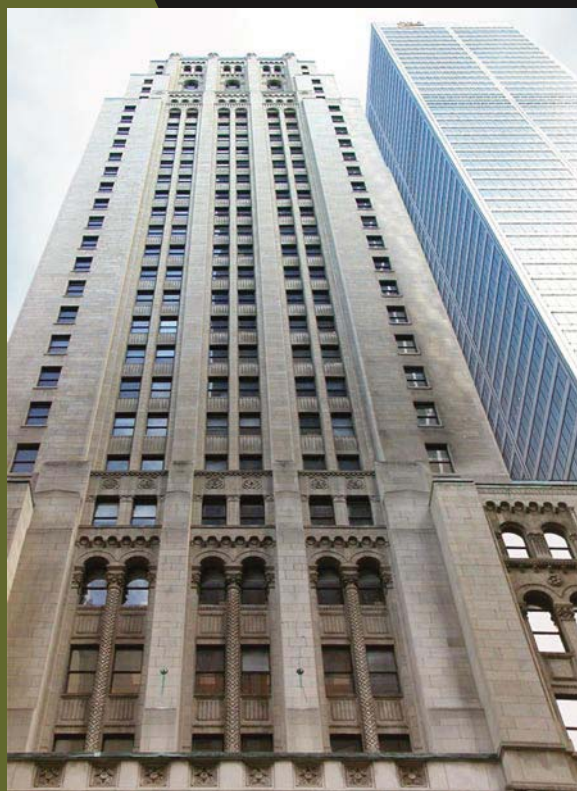


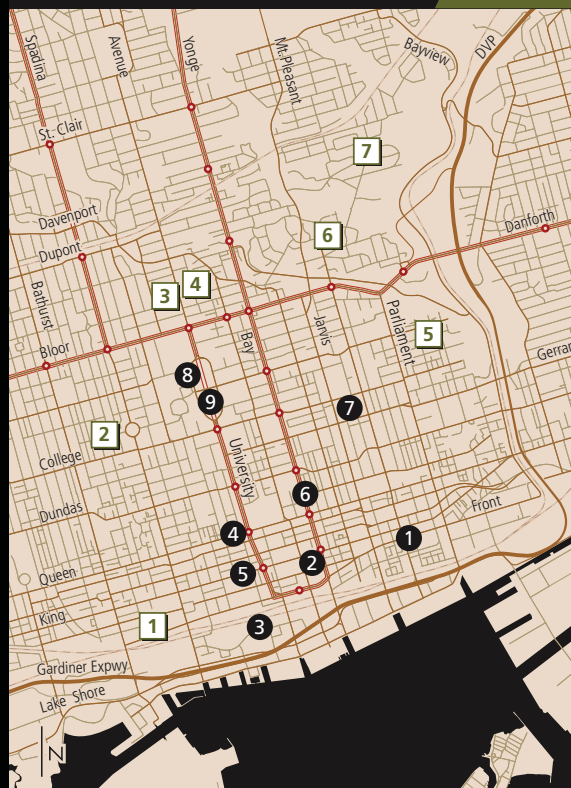
TORONTO'S DOWNTOWN HERITAGE



Toronto is an exciting modern city...
because it is very much in touch with its past.

With over 8,000 properties included on the City of Toronto's Inventory of Heritage Properties, this guide to Toronto's downtown heritage has been arranged by neighbourhood or "themed" areas to highlight some of the most significant heritage buildings in the downtown core.

Take a walk around the downtown neighbourhoods and see how our heritage buildings form an integral part of this city.



Key Map

Heritage Areas

- ① Old Town
- ② Financial District
- ③ Railway Lands
- ④ Queen Street West
- ⑤ King Street West
- ⑥ Yonge Street
- ⑦ Allan Gardens
- ⑧ University of Toronto
- ⑨ Ontario Legislative Buildings

Heritage Conservation Districts

- ① Draper Street
- ② Harbord Village
- ③ East Annex
- ④ Yorkville-Hazelton
- ⑤ Cabbagetown
- ⑥ South Rosedale
- ⑦ North Rosedale

🚇 TTC Subway Stations

CREATE YOUR OWN WALKING TOUR

For further information on heritage preservation in the City of Toronto, please contact:
Heritage Preservation Services, City of Toronto - City Planning Division
416-338-1078 or 416-338-1077
www.toronto.ca/heritage-preservation



York County Courthouse

1



OLD TOWN

This area includes the ten-block townsite that was founded as the Town of York in 1797. For a century, this was the heart of the community. The first permanent City Hall was erected here in the 1840s following the incorporation of the City of Toronto in 1834. The Great Fire of 1849 destroyed or damaged most of the Old Town. The area fell into neglect in the early 1900s after the commercial district of the city moved to Yonge Street. The revitalization of Old Town and the surrounding neighbourhood began in earnest in 1967 when Canada's 100th anniversary was celebrated with the restoration of St. Lawrence Hall.

A 49 Wellington Street East

Gooderham Building (1892) - One of Toronto's most visible landmarks, the "Flatiron Building" opened as the headquarters of the influential Gooderham family of the Gooderham and Worts Distillery.

B 35-49 Front Street East

Warehouses (1872-1874) - Restored as part of the rejuvenation of this neighbourhood at the end of the 20th Century, these elaborately detailed commercial properties include Toronto's only surviving complete cast-iron façade at #45-49.

C 91 Front Street East

Second City Hall (1845) and **St. Lawrence Market** (1904) - Once the heart of Old Town's commercial district and still an active farmers' market, St. Lawrence Market incorporates a wall of Toronto's second municipal building on its north façade.

D 55 Mill Street

Gooderham & Worts Distillery (began 1832) - Site of Canada's oldest distillery and a National Historic Site, the complex of over 30 of the best preserved 19th Century industrial buildings is now an active commercial and residential enclave known as the Distillery District.

E 106 King Street East

St. James' Cathedral (1853) - A landmark with the tallest church steeple in Canada, St. James' boasts a Gothic Revival exterior with a stained glass window by Tiffany and, inside, one of the few carillons in the country.

F 151 King Street East

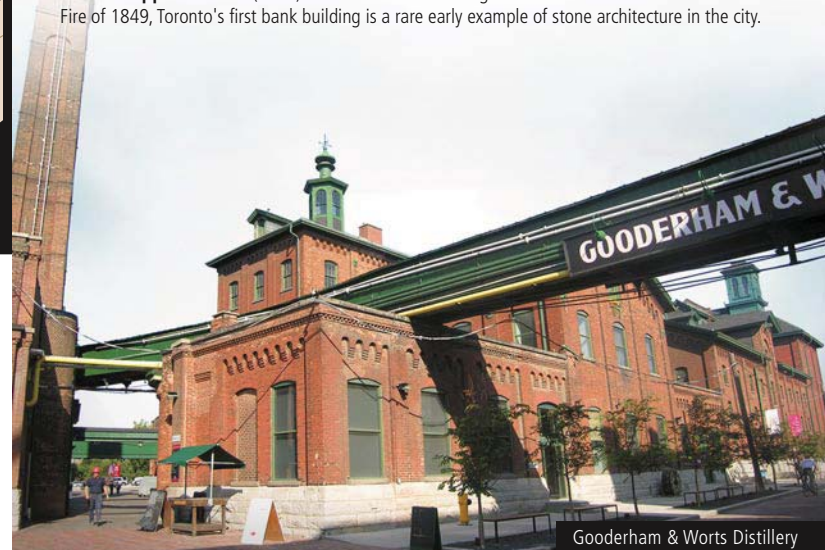
St. Lawrence Hall (1851) - St. Lawrence Hall was the cultural centre of the city after its opening in 1851. Later restored by the City to celebrate Canada's 100th anniversary, it reopened as the headquarters of the National Ballet of Canada.

G 57 Adelaide Street East

York County Courthouse (1853) - Built with an imposing Greek Revival façade for an upper-tier level of government, the building fell into disrepair until its recent reopening as a popular restaurant in the expanded downtown entertainment district.

H 252 Adelaide Street East

Bank of Upper Canada (1830) - One of the few buildings in Old Toronto that survived the Great Fire of 1849, Toronto's first bank building is a rare early example of stone architecture in the city.

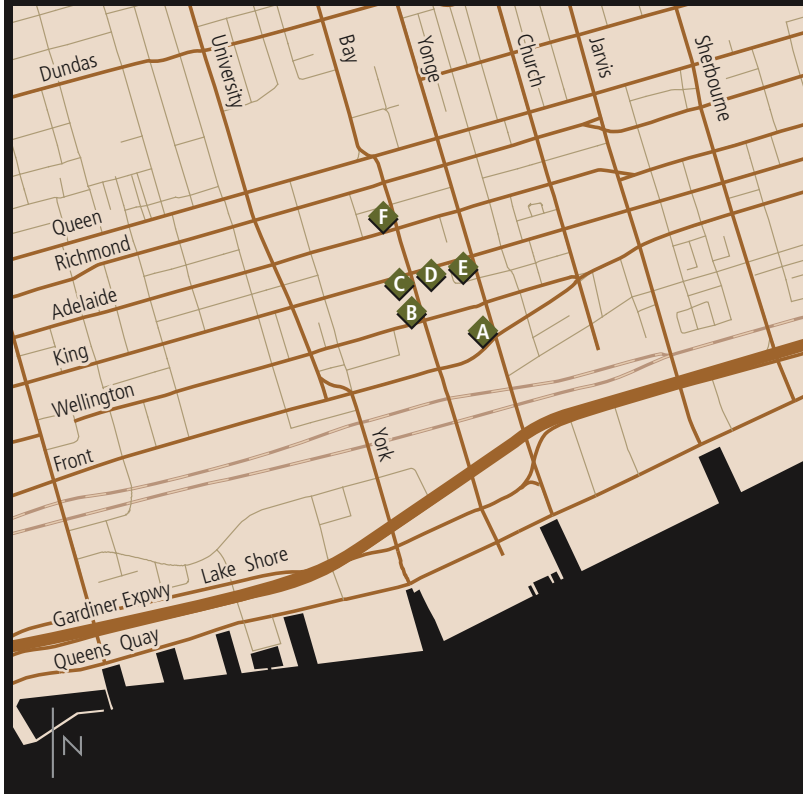


Gooderham & Worts Distillery



Bank of Montreal

2



FINANCIAL DISTRICT

This area was first developed in the late 19th Century as part of "New Town", the westward continuation of the Old Town of York. A century later, the original shops and houses were replaced with substantial commercial buildings that extended along King and Wellington Streets, west of Yonge Street. The Great Fire of 1904 destroyed most of the area, beginning a massive rebuilding campaign that welcomed Toronto's first skyscrapers and, after World War II, the tallest buildings in Canada.

A 30 Yonge Street

Bank of Montreal (1886) – This richly embellished building with an impressive stained glass dome opened as the Bank of Montreal's local headquarters. It survived the Great Fire of 1904 and is incorporated into BCE Place as the location of Canada's "Hockey Hall of Fame".

B 234 Bay Street

Toronto Stock Exchange Building (1937) – The former Toronto Stock Exchange is Toronto's most recognizable Art Deco landmark, with a sculpted frieze that appears to show a businessman with his hand in the pocket of a worker.

C 320 Bay Street

Canada Permanent Building (1930) – In addition to its remarkable exterior, this building boasts a richly decorated banking hall with an elevator lobby that uses images copied from the Tomb of King Tutankhamun.

D 1 King Street West

Dominion Bank Building (1914) – This is one of the first skyscrapers in Toronto, positioned to anchor the prominent intersection of Yonge and King. It has a two-storey banking hall and one of the largest vaults in Canada.

E 25 King Street West and 199 Bay Street ~ Photo on Front Cover

Canadian Bank of Commerce (1931) and **Commerce Court West** (1972) - These buildings form part of the four-building complex known as Commerce Court. The Canadian Imperial Bank of Commerce building is an excellent example of a late 1920s skyscraper while the building known as Commerce Court West is a modern architectural landmark by architect I. M. Pei. The entire site demonstrates the successful blending of old and new through the sensitive handling of material, form and site.

F 55 King Street West

Toronto Dominion Centre (1967-1969) - The Toronto-Dominion Centre is an outstanding example of the International Style of architecture, designed by the renowned architect, Ludwig Mies van der Rohe. It uses a massive granite-clad plaza to link a separate banking hall, complementary commercial towers and Toronto's first underground shopping concourse.



Commerce Court West



Royal York Hotel

3



RAILWAY LANDS

Beginning in the 1850s, the area along Toronto's waterfront was transformed by the arrival of the steam railways. Over time, intense competition forced the various railway companies to share facilities – including 'Union Station' - and develop interconnected rail-to-rail networks. The 'iron horses' changed the way goods were moved and led to the appearance of numerous buildings related to this mode of transportation.

A 71 Front Street West

Union Station (1927) – Toronto's third and current Union Station, this monumental building is considered the best example of a Canadian railway facility designed in the Beaux Arts tradition. The interior Great Hall impresses with its overall scale, Classical detailing and Canadian iconography.

B 100 Front Street West

Royal York Hotel (1929, add. 1956) – Built by the Canadian Pacific Railway and linked to Union Station by an underground tunnel, this hotel opened as the tallest building in the British Empire. It is an excellent example of "Chateau" design, the style favoured by the CPR for its accommodations.

C 40 Bay Street

Postal Delivery Building (began 1941) – Constructed during World War II as the central distribution centre for mail in Toronto, the Postal Delivery Building had access to the railway lines and was linked by tunnel to Union Station. Portions of the building, including the exterior "bas relief" carvings illustrating the history of transportation and communication, are incorporated into the Air Canada Centre.

D 222 Bremner Boulevard

Canadian Pacific Railway Roundhouse (1929-31) - The John Street (CPR) Roundhouse is significant as one of the last of its type in Canada. Recognized as a National Historic Site, the roundhouse and the adjoining turntable, water tower and sand and coal loader used state-of-the-art technology to service steam locomotives.

E 301 Front Street West

CN Tower (1975) - A communications tower for radio and television broadcast facilities, the CN Tower is the world's tallest freestanding structure. It is an internationally-recognized symbol of the city and the most visible feature of the Toronto skyline.



CPR Roundhouse



Queen Street West Commercial Block

4



QUEEN STREET WEST

At the end of the 19th Century, Toronto's City Hall relocated to Queen Street, west of Yonge Street. This area emerged as the new city centre, after Robert Simpson and Timothy Eaton opened competing department stores (then new to retailing) nearby. In recent years, the Queen Street commercial strip between Yonge Street and Spadina Avenue became a popular artists' and musicians' haunt, as well as a shopping destination.

A 60 Queen Street West

Old City Hall (completed 1899) – Toronto's 3rd City Hall, now affectionately known as "Old City Hall" opened after a ten-year construction period. Now a National Historic Site, the building is recognized as Toronto's best example of the Richardsonian Romanesque style, identified by the two-toned sandstone finishes and mythological detailing, including the gargoyles that hang over the clock tower. Architect E. J. Lennox incorporated his face in one of the entrance arches and his name beneath the eaves.

B 100 Queen Street West

City Hall (1965) Designed by Finnish architect Viljo Revel, Toronto's 4th and current City Hall is a local landmark. With its curved towers that wrap around an elevated pod-like Council Chambers, the building is set in a massive public square with a reflecting pool/skating rink.

C 130 Queen Street West

Osgoode Hall (1829-32 with various additions) – Built as the headquarters of the Law Society of Upper Canada (the organization that regulates the province's lawyers), Osgoode Hall is one of Toronto's earliest and best examples of Classical designs inspired by Italian Renaissance architecture. Its elaborate wrought iron gates have been described as "cattle catchers", but were actually designed for crowd control.

D 299 Queen Street West

Wesley Building (1913) – Designed for a Methodist book publisher, the building is covered with terra cotta (baked clay) cladding and images associated with medieval cathedrals. A landmark at the corner of Queen and John Street, the building was restored as the headquarters and studios of local television network "CityTV".

E 280 Queen Street West

Commercial Block (1881) – A landmark on the Queen Street commercial strip, this building is strategically located where the street widens as it extends west to Spadina Avenue. Designed in the Second Empire style identified by the "mansard" or double-gable roof, the building is covered with ornate woodwork associated with late 19th Century architecture.

F Queen Street West from Peter/Soho to Spadina

This section of Queen Street retains many of the late 19th Century commercial buildings that give this popular shopping district its distinctive character. Look up to see the elaborate brick and wood detailing that survives on the Noble Block at #342-354 & the Black Bull Tavern (#280) at Queen and Soho.

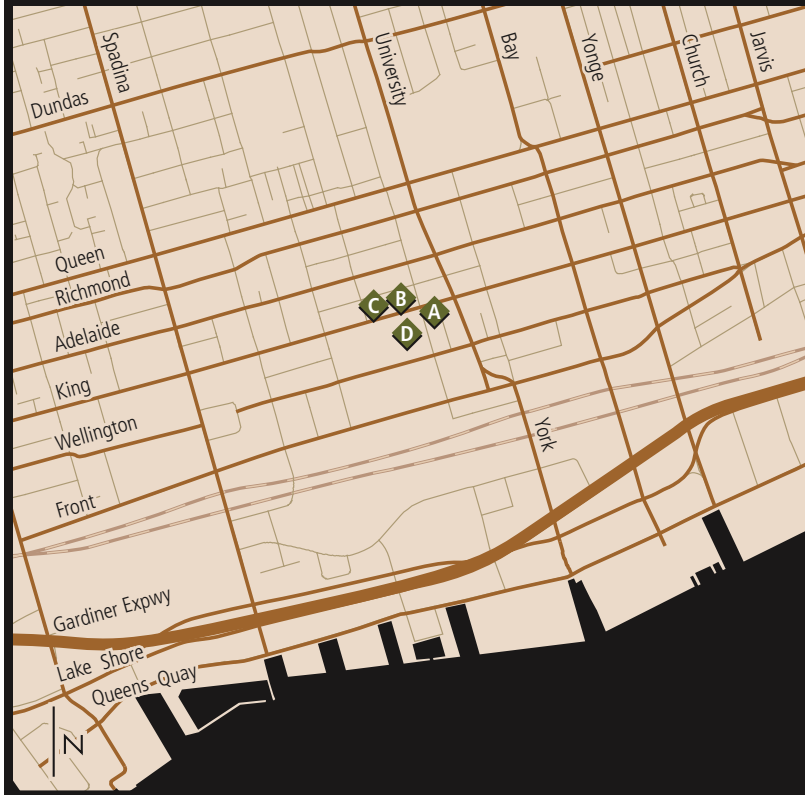


Wesley Building



Roy Thomson Hall

5



KING STREET WEST 'ENTERTAINMENT DISTRICT'

This area was developed in the early 19th Century as the location of fine residences, churches, the province's Third Parliament Buildings and the original home of Upper Canada College, the private boys' school. As a result, the intersection of King and Simcoe was dubbed "Legislation, Education, Salvation and Damnation" – the latter for a former corner tavern. The character of the area changed after the Great Fire of 1904 destroyed the nearby industrial district, which relocated here. As a result, the elegant Royal Alexandra Theatre ended up sharing the block with a series of warehouses. The 1960s revitalization of the neighbourhood began with entrepreneur "Honest Ed" Mirvish's purchase and reopening of the Royal Alex and the conversion of the adjoining buildings for shops and restaurants.

A 73 Simcoe Street/189 King Street West

St. Andrew's Presbyterian Church (1875) and Manse (1873) – St. Andrew's was designed in the "Scottish Baronial" style, identified by its ornamental square tower. Its complementary manse adjoins "Symphony Place", one of the first residential condominiums introduced in the city's downtown core.

B 260 King Street West

Royal Alexandra Theatre (1907) – The Royal Alexandra Theatre was financed by Cawthra Mulock, touted as Toronto's "youngest millionaire". Designed as an elegant Beaux-Arts jewel box, its interior boasts an elaborate mural painted by Toronto artist, Frederick Challenger.

C 266 King Street West

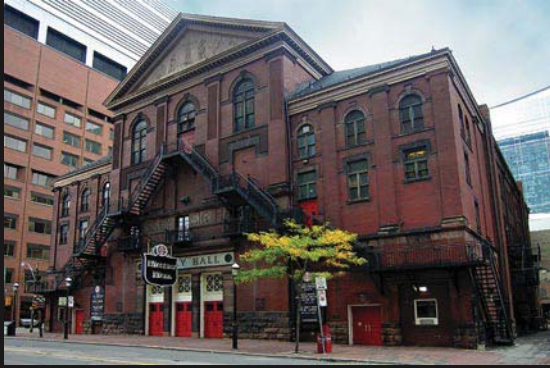
Reid Building (1904) – Directly west of the Royal Alex, this is one of a series of buildings along this stretch of King Street that were built as industrial warehouses in the early 20th Century. The Reid Building was one of the first "reclaimed" by merchant and theatre impresario Ed Mirvish in the 1960s.

D 60 Simcoe Street

Roy Thomson Hall (1982) – Designed by Vancouver-based architect Arthur Erickson, Roy Thomson Hall is the home of the Toronto Symphony Orchestra. Set apart by its unique shape and moat, the performance venue is the "youngest" structure to be recognized as a "heritage" building by the City of Toronto.



St. Andrew's Presbyterian Church



Massey Hall

6



YONGE STREET

Surveyed in 1796, Yonge Street is the world's longest street at nearly 1900 kilometres. It became Toronto's "main street" at the end of the 19th Century when Robert Simpson and Timothy Eaton opened competing department stores around the corner of Yonge and Queen. This section, which covers the five major intersections at Yonge and Front, King, Queen, Dundas and College Streets, contains an array of important bank buildings, stores, skyscrapers and theatres that continue to draw people downtown for business and entertainment.

A Yonge & Wellington Streets

BCE Place – This contemporary commercial development incorporates the facades of the Commercial Bank of the Midland District (1845) on the inside and a series of mid-19th Century warehouses along the Yonge and Wellington frontages.

B 67 Yonge St

Trader's Bank Building (1906) – Just south of the corner of Yonge and King Streets, the first skyscraper built in Toronto opened as the tallest building in the British Empire. It anchors a group of neighbouring skyscrapers built in the World War I era and later.

C 176 Yonge St

Robert Simpson Department Store (1895 with later additions) – Prominently located at Yonge and Queen, Simpson's was the first high-rise department store in Canada. Now occupied by "The Bay", the block-size complex includes a superb 1928 Art Deco addition at the west end.

D 189 Yonge St

Loew's Yonge Street Theatre and Winter Garden Theatre (1914) – Located in the "Theatre Block" north of the Yonge and Queen intersection, this diminutive building contains two auditoriums. Above Loew's first-floor vaudeville house, the Winter Garden is one of Canada's earliest "atmospheric" theatres where real tree branches decorate the walls and ceiling.

E 197 and 205 Yonge St

Canadian Bank of Commerce (1905) and Bank of Toronto (1906) – These former bank branches were strategically positioned near Simpson's and Eaton's Department Stores. Both banks were inspired by "Beaux Arts" styling, with a distinctive dome on 205 Yonge.

F 15 Shuter St

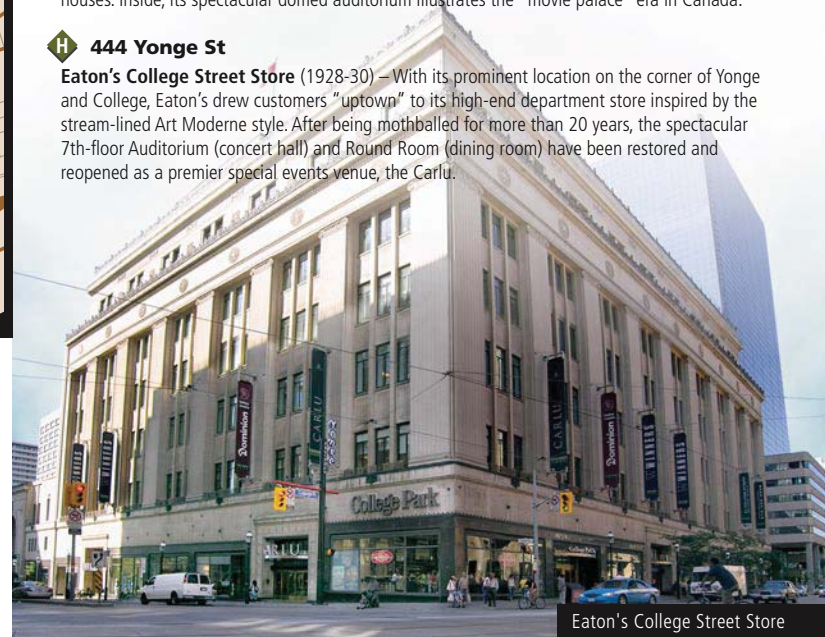
Massey Hall (1894) – Situated just off Yonge Street in the Theatre Block and noted for its outstanding acoustics, Massey Hall has remained a popular venue for concerts for over a century.

G 263 Yonge St

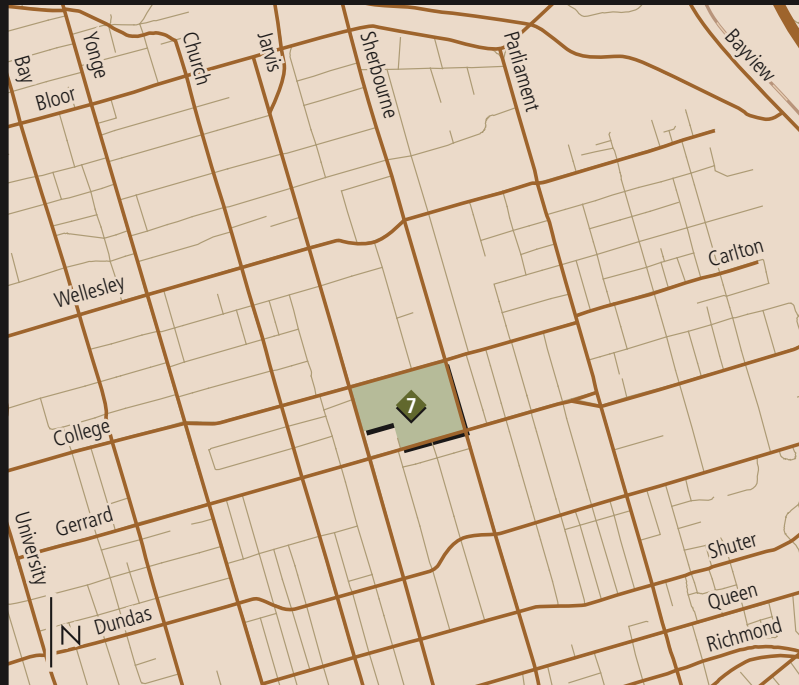
Pantages Theatre (1920) – Located in the Theatre Block south of Dundas Street, the building now known as the Canon Theatre was the largest and the last of the combined vaudeville-movie houses. Inside, its spectacular domed auditorium illustrates the "movie palace" era in Canada.

H 444 Yonge St

Eaton's College Street Store (1928-30) – With its prominent location on the corner of Yonge and College, Eaton's drew customers "uptown" to its high-end department store inspired by the stream-lined Art Moderne style. After being mothballed for more than 20 years, the spectacular 7th-floor Auditorium (concert hall) and Round Room (dining room) have been restored and reopened as a premier special events venue, the Carlu.



Eaton's College Street Store



7

7 ALLAN GARDENS

An urban park devoted to horticulture, Allan Gardens contains a collection of greenhouse buildings that illustrate the evolution of glass technology from the Edwardian era to the later 20th Century. The Conservatory boasts the "Palm House", a heritage landmark esteemed amongst horticulturalists and architects. The Conservatory is open to the public year-round.



Allan Gardens Greenhouse



8 + 9

8 UNIVERSITY OF TORONTO

A stroll through the University of Toronto campus should include such highlights as:

- 8a Koffler Centre 8b Convocation Hall 8c Knox College 8d University College
- 8e Hart House 8f St. Michaels's College 8g Trinity College 8h Victoria College

9 THE ONTARIO LEGISLATIVE BUILDINGS

The Ontario Legislative Building (1886-1892) located at the top of University Avenue, conveys a grand and authoritative presence, as it should, being the seat of provincial government.

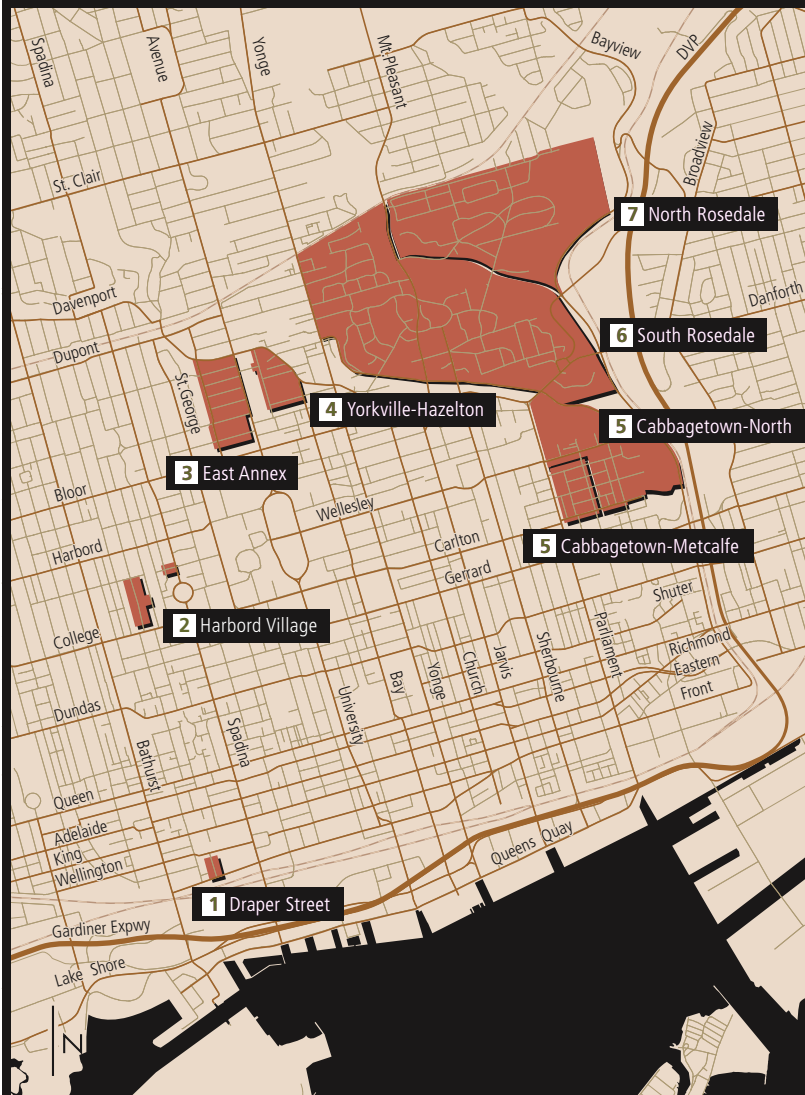


University of Toronto Buildings



Yorkville

d
DISTRICTS



HERITAGE CONSERVATION DISTRICTS

In order to protect and enhance the special character of groups of properties in an area, City Council is able to designate an area as a Heritage Conservation District. The character of these districts is established by the overall heritage quality of buildings, streets and open spaces as seen together.

1 Draper Street

Designated as a Heritage Conservation District in 1999, Draper Street extends one block between Front Street West and Wellington Street West in the King-Spadina neighbourhood. The single-lane street has 28 houses dating to 1881-1886, consisting of Second Empire cottages and Toronto Bay-and-Gable rowhouses.

2 Harbord Village

A small district, this area was originally developed by families that played a very significant role in the history of Toronto.

3 East Annex

The first large-scale residential neighbourhood designated as a district. The character of the area is generally that of well maintained, late 19th or early 20th Century buildings, with variations from street to street.

4 Yorkville-Hazelton

Originally a working class suburb, this district contains a wealth of heritage character from its beginning as the rural Village of Yorkville (incorp. 1853) to its current status as a shopping mecca. Actors and artists were drawn to the area in the 1950's and 1960's when Yorkville became one of Toronto's most creative arts communities.

5 Cabbagetown-Metcalf & Cabbagetown North

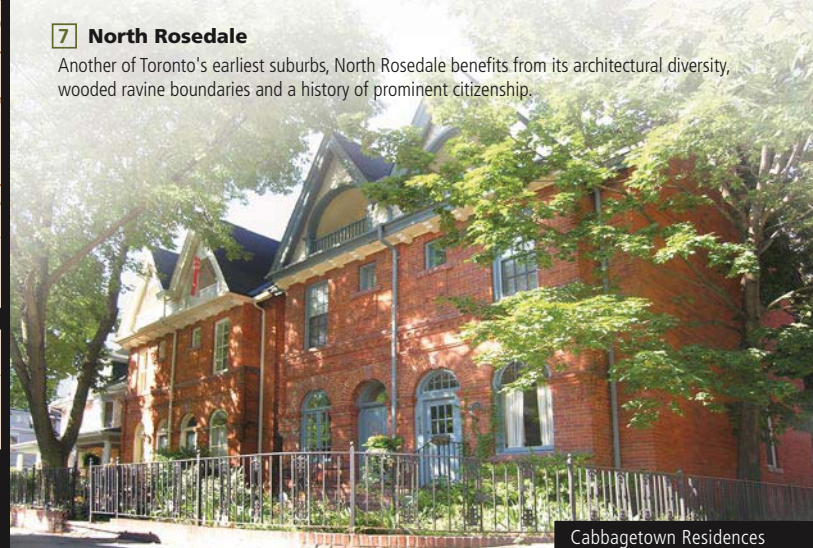
One of Toronto's most vibrant residential communities, Cabbagetown's 19th Century streetscapes remain relatively unchanged. Highlights include workers' cottages, row housing and single family residences. Having fallen into disrepair during the Depression of the 1930's, homes in this area have been lovingly restored over the past thirty years and the original "small town" feeling has been recaptured.

6 South Rosedale

This area was originally included in the Village of Yorkville and is one of Toronto's earliest suburbs. South Rosedale is an eclectic neighbourhood consisting of a broad range of architectural styles with excellent examples of residential architecture from all periods from the 19th Century to the present.

7 North Rosedale

Another of Toronto's earliest suburbs, North Rosedale benefits from its architectural diversity, wooded ravine boundaries and a history of prominent citizenship.



Cabbagetown Residences